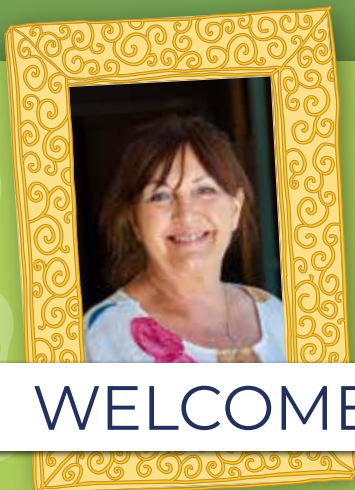




# Cartref Dyfi

Bank Lane | Machynlleth | SY20 8EL



**WELCOME**

**Hi, I'm June Stalham,  
Service Manager at Cartref Dyfi.**

**I manage a team of 40 who support me in running a service that aims to deliver the type of care that we would want for our own loved ones.**

My deputy, team leaders, domestics, cooks and maintenance operatives ensure that we have considered all angles of making Cartref Dyfi as much of a home as possible.



## ABOUT

**Situated in the centre of Machynlleth with all of its amenities, the single-storey home is well equipped for modern care needs, while providing a homely stay.**

Pleasant lounges and a beautiful garden offer relaxing and comfortable accommodation both inside and out. All bedrooms are fully furnished and include 24-hour call systems.



### Service Facilities

- Physiotherapy
- Own GP if required
- Own Furniture if required
- Close to Local shops
- Near Public Transport
- Smoking not permitted
- Television point in own room
- Gardens for residents

### Bed types

- x 10 Residential
- x 18 Dementia





# Cost of Care

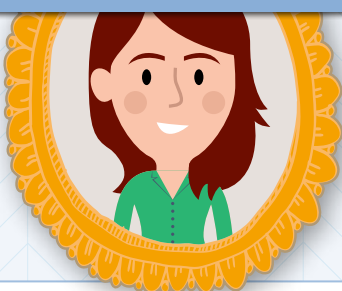
Choosing a care home can be a difficult time, understanding the types of care available and how the fees will apply to you.

The fees can vary according to whether you will be Self Funded or Local Authority funded and also on the individual and their care requirements.

Shaw healthcare offer a personalised care plan to ensure all of your needs are fully catered for. We can help you with calculating the cost of care through a Care Assessment to determine what your fees will be.



## TESTIMONIAL



My mother has been resident at this care home for about 5 years now. She arrived with very mild dementia, which has progressed over the years. The staff have always been very attentive and treated her with dignity and respect. Nothing has been too much trouble for the manager or her staff. They often go the extra mile - over and above the call of duty. The first thing my mother said when she arrived was how lovely the food was. She still tells me how much she enjoys it now. I am always made welcome and greeted with a warm smile when I visit her.

Daughter of a resident [carehome.co.uk](http://carehome.co.uk)

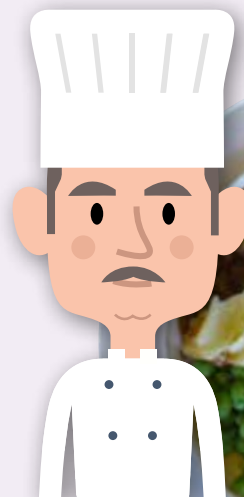




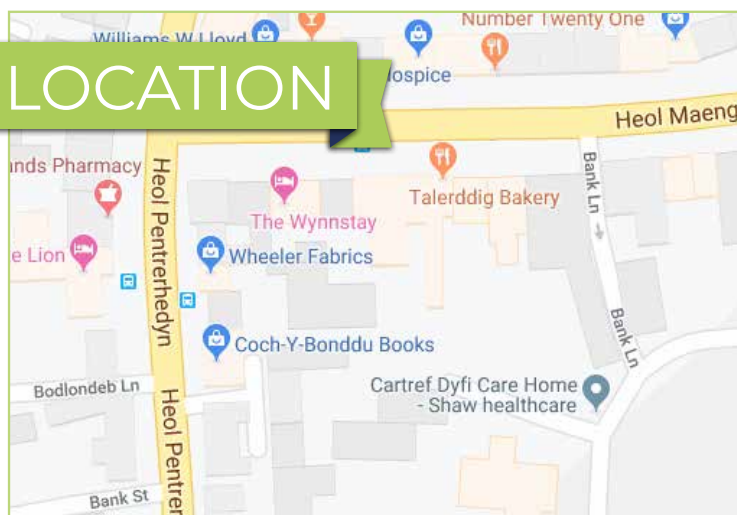
## DINING EXPERIENCE

Our trained chefs prepare all meals on site with a focus on homemade freshly prepared meals and can cater for all dietary requirements including, diabetics, ethnic & cultural, dysphagia, allergies etc

The menu, compiled in conjunction with Dieticians, rotates on a monthly & seasonal basis to ensure a balanced diet, a variety of cuisines and daily options.



## LOCATION



For more information,  
contact us on:

**0800 902 0092**

Or email:

[customercare@shaw.co.uk](mailto:customercare@shaw.co.uk)

**Cartref Dyfi**

Bank Lane, Machynlleth SY20 8EL



[www.shaw.co.uk](http://www.shaw.co.uk)



[shawhealthcare](https://www.facebook.com/shawhealthcare)



[@shawhealthcare](https://twitter.com/shawhealthcare)