



Pembroke Dock

Fort Road | Pembroke Dock | Pembrokeshire | SA72 6SX



**Hi, I'm Andrew Davis,
Service Manager at Pembroke Dock.**

I manage a team of 42 who support me in running a service that aims to deliver the type of care that we would want for our own loved ones.

My deputy, team leaders, nurses, domestics, cooks and maintenance operatives ensure that we have considered all angles of making Pembroke Dock as much of a "home" as possible.



ABOUT

Pembroke Dock is a Nurse Lead Mental Health Service and Dementia Unit that has the goal of supporting our Service Users on their journey to increased independence and quality of life.

Pembroke Dock offers a versatile residential service that includes both care and nursing packages, welcoming both younger adults and older people.

The home's philosophy is based around respecting the choice of the individual in order to deliver care that is satisfying and allows each service user to get the most out of life.

Staff are welcoming to family members and visitors, with many social events and activities organised to encourage the pursuit of personal interests.



Service Facilities

- Full wheelchair access
- Passenger lifts
- TV points in rooms
- Telephone points in room
- Secure garden
- Laundry service
- Dietary options
- Beauty treatments
- Pets at the managers discretion

Bed types

24

Mental Health Nursing

Dementia Care



PEOPLE WE CAN SUPPORT

We believe that no brain injury is the same and the impact it can have on an individual can vary massively. Person-centred care is key to understanding the challenges faced by the individual and compiling a personal plan is key to ensuring the best care possible for that person.

We capture likes, dislikes, preferences with communications, mealtimes, activities, anything that makes that individual who they are a part of their care.

EMOTIONAL

Denial of limitations

Depression

Resentment

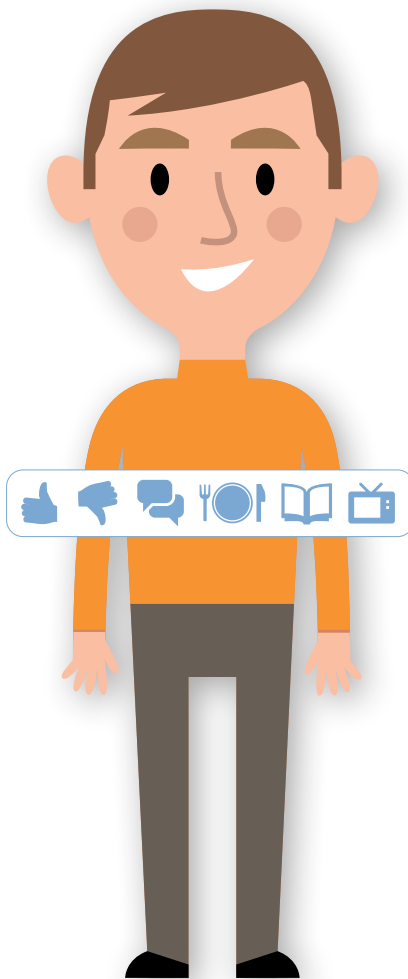
Aggression

Lack of confidence

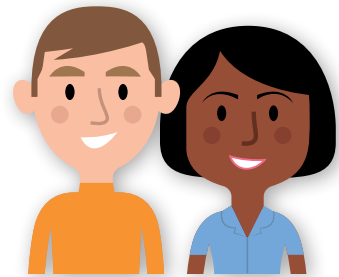
Isolation

Fluctuating Mood

Grieving for past life



PHYSICAL



The nature of the injuries to the brain can affect many aspects of an individuals' physical ability from poor balance, pain, coordination and continence,



Environment

One level, minor secure, own rooms and en suite, light and airy communal areas, easy access to local facilities, support from other departments.



Restraint

Surehaven Pembroke Dock DO NOT use any form of physical restraint but are skilled

PSYCHOLOGICAL

Mental health, hallucinations, trauma survivors, boundary awareness and insight issues.

Section 117

Deprivation of liberty, Court of Protection.



A HOLISTIC TEAM APPROACH

The Shaw family approach means that each individual member of the team contributes to making the lives of those who use our services richer. Each Resident is assigned their own nurse and a number of key workers.

Our team consists Registered Mental Health Nurses as well as Learning Disability and General Nurses, Support Workers, Occupational Therapists, Activity Coordinators, GP, Physiotherapist, Speech and Language Therapist and Neuropsychologist and Massage Therapist. We also have access to specialist services such as speech, diabetic and eating disorders.

POSITIVE INTERVENTION AT “EVERY OPPORTUNITY”



THERAPIES



1:1

Trips making use of the local amenities.

ACTIVITIES



Assessments are carried out by our co-ordinator to establish past hobbies and interests, what is still possible, what can be adapted to present circumstances and how changes in personality can be accommodated.

Each resident goes out at least once a day to some activity, therapy or sport, as well as plenty of leisure activities.



DINING EXPERIENCE

Our trained cooks prepare meals on site with a focus on homemade freshly prepared meals and can cater for all dietary requirements including diabetics, ethnic & cultural, dysphagia, allergies etc

The menu is compiled in conjunction with Dieticians and with seasonal changes to the menu continually ensuring a balanced diet with a variety of cuisines being offered.



LOCATION



For more information, contact us on:

01646 621105

Or email: customer care@shaw.co.uk

Pembroke Dock

Fort Road, Pembroke Dock,
Pembrokeshire SA72 6SX



www.shaw.co.uk



[shawhealthcare](https://www.facebook.com/shawhealthcare)



[@shawhealthcare](https://twitter.com/shawhealthcare)